

Modular Ramps 101

A guide to buying or renting a modular ramp.



Contents



Introduction	3
In-Home Consultation	4 – 7
Proposal & Cost	8
Installation	9
Service	9
The Lifeway Advantage	9
Pathway 3-G	10
Titan Commercial Ramp	14



Thank you for contacting Lifeway Mobility. We're happy to help make your home or business accessible. This e-book will explain the modular ramp buying process, including the site evaluation, proposal, installation, service, and the Lifeway Advantage.

We are providing you this e-book to help you make an informed choice when choosing a provider. We ask that you take the time to read this information prior to your free assessment. This will help prepare you for the appointment and make sure any questions and concerns can be addressed by our Accessibility Consultant at that time.

What is a Modular Ramp?

At Lifeway Mobility, we provide aluminum modular ramps. We prefer this type of ramp because they:

- ❖ Are lightweight compared to steel and can be easily transported and installed
- ❖ Can be used for temporary or long-term applications
- ❖ Can be configured in numerous layouts
- ❖ Have superior traction compared to wood ramps
- ❖ Are virtually maintenance free, and will not rust or rot
- ❖ Do not alter or add to the structure of the home or business
- ❖ Can be relocated or sold when it is no longer needed



An aluminum modular ramp is constructed of multiple pieces that are manufactured off-site and assembled on-site by our experienced installation technicians. These include sections of ramp, landings, handrails, and footings.

Our aluminum ramps come in solid or mesh options and if you prefer a color other than stainless, powder coating is also available. Color options include black, bronze, and tan. Lifeway Mobility offers a monthly payment option along with multiple purchasing options including new, short-term rental, rent-to-own, and refurbished.



Once you have contacted Lifeway Mobility, a Customer Care Coordinator will collect your information and schedule a FREE on-site evaluation

On-site Evaluation

During this assessment, one of our trained Accessibility Consultants will come to your home or business and evaluate your space to determine what your ramp options are.

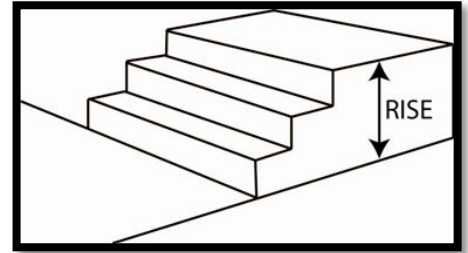
Step #1: Determine the best access point:

This procedure will help determine which is the best access point for the ramp.

- We will make sure that the doorway you want to use is wide enough to accommodate a wheelchair.
- We also look at the interior arrangement just inside that door to make sure that there is a clear space to approach the door.
- We then look at the placement of the existing door handles and the swing direction of the door, to make sure there is enough room for someone to maneuver their wheelchair on the landing outside the door.
- It is also best to choose an access point with a solid and level landing place such as a driveway or walk way.

Step #2: Measure the Rise:

We measure the rise from the door threshold or from the landing outside the door to the flat area that the bottom end of the ramp will rest on. This will help determine the length and slope of the ramp.



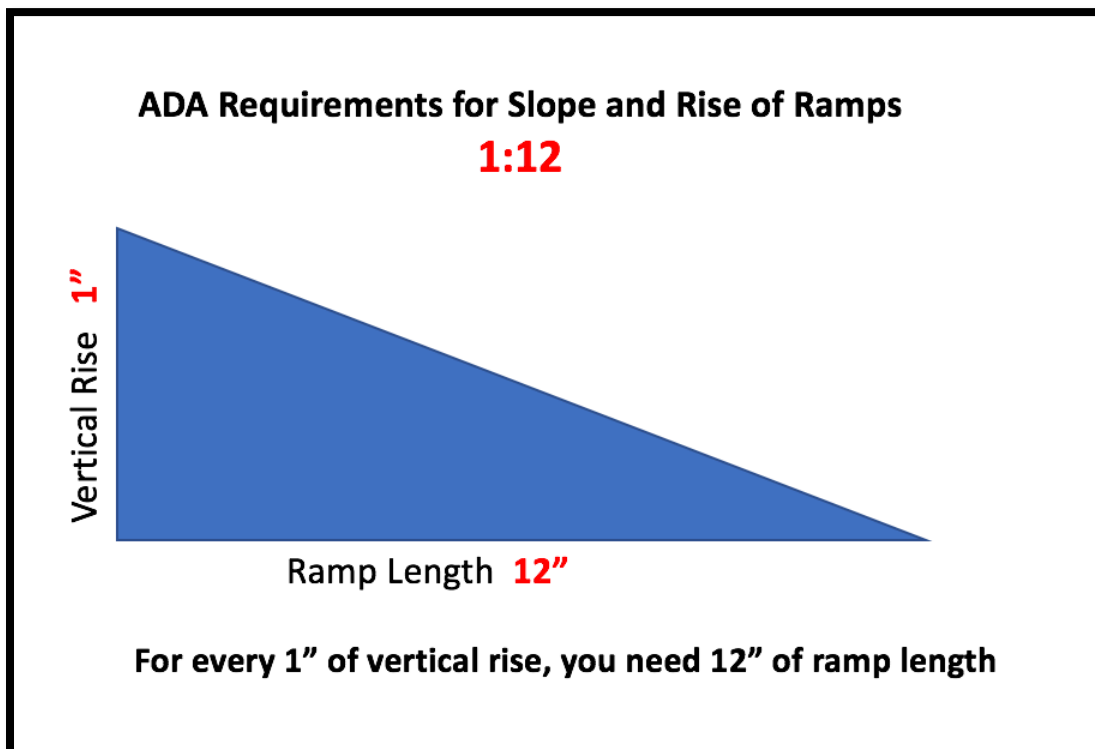
Step #3: Determine Proper Slope and Best Layout:

Based on the measurement of the rise, available space for the ramp, and the user's abilities, we will determine the proper slope and best layout for the ramp.

For commercial ramps, we adhere to the ADA guideline of a 1:12 slope. This means that for every 1 inch of rise, 12-inches of ramp is needed. This keeps the ramp from being too steep to navigate safely.

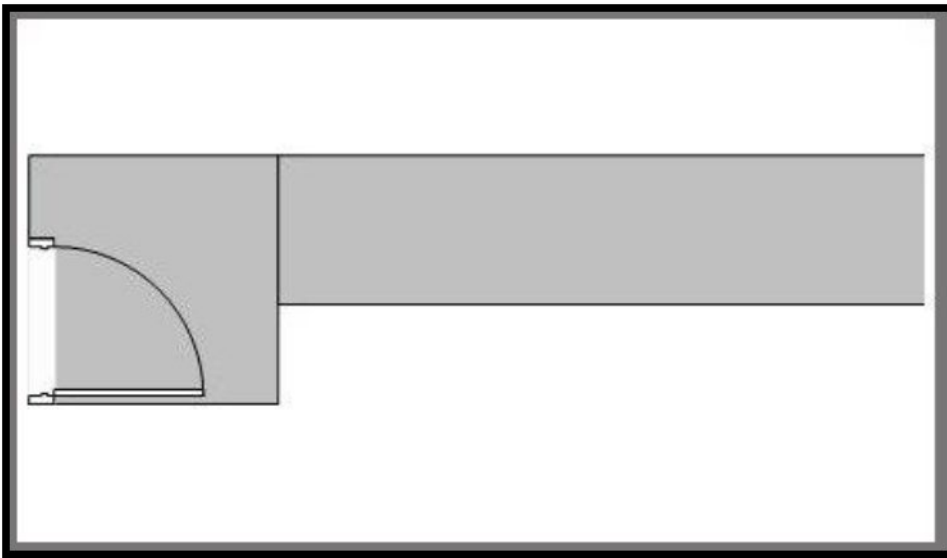
We also follow the 1:12 slope guideline for residential ramps when possible. However, residential ramps are not required to follow ADA regulations and if space is limited, a 1:8 slope is also acceptable.

Our Accessibility Consultant will determine the proper slope for your ramp based on the space, and the user's physical ability and mobility equipment. This will be addressed during the on-site evaluation.

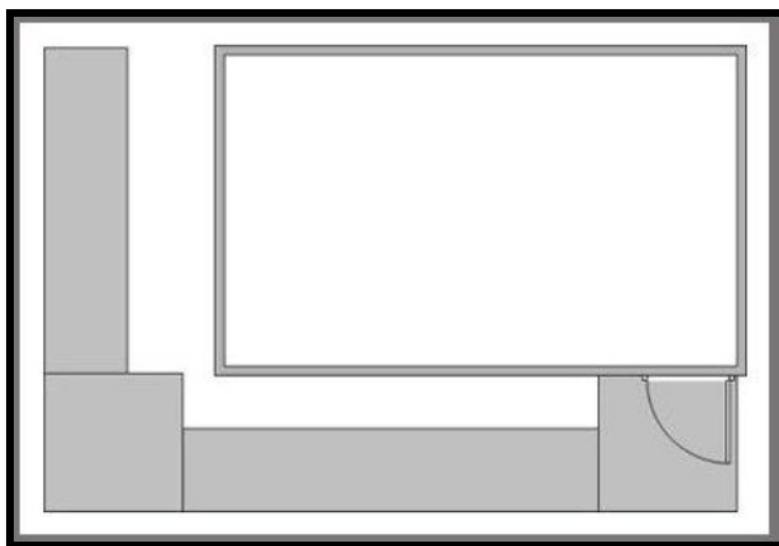


Common Ramp Layouts

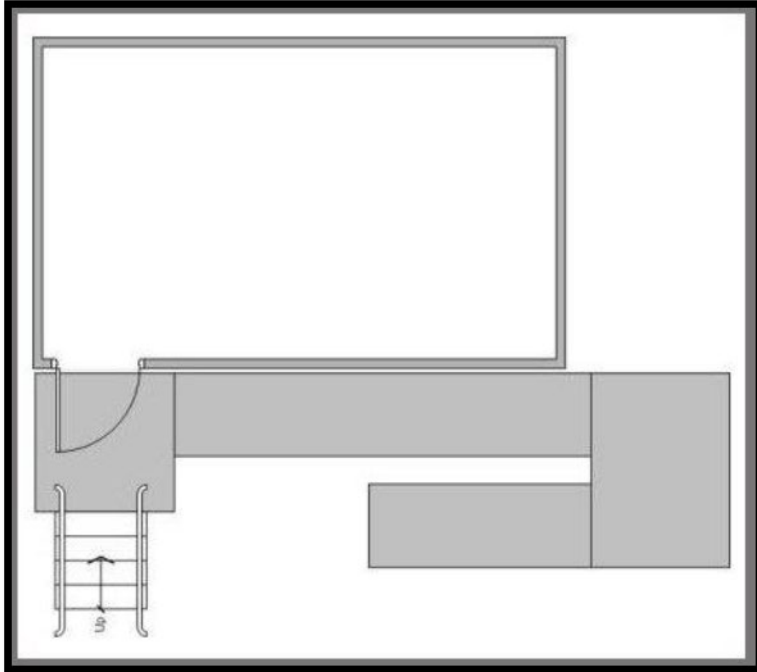
Straight - This is best if you have room for the entire length of the ramp to project straight out from the entrance.



L-Shape - If you don't want the ramp projecting straight out of the entrance, or if your desired landing area is on a different side of the building, you can "wrap" the ramp around a corner.



Switch Back - This is best if you want to minimize the total amount of space that the ramp takes up on your property.



Addition of Stairs - If you decide to use the primary building entrance for your ramp system, consider providing steps that go directly from ground level to the top of the highest platform of the ramp system.

Other considerations include:

- If the measured rise is greater than 30", it might be more cost effective to consider a vertical platform lift instead of a ramp system.
- If the rise is less than 3 inches, you should consider a threshold ramp.

If you have additional safety or access concerns, please feel free to discuss them with the Accessibility Consultant during the on-site evaluation.

Proposal

Following the on-site evaluation, your Accessibility Consultant will prepare a detailed proposal. This will include the cost to purchase or lease the ramp and installation. This proposal will typically be available within 1-2 business days.



Cost

The cost of your modular ramp is determined by its length and configuration along with any options that you may choose such as powder coating or additional stairs.

A new modular ramp system will cost **\$50 per square foot** including installation. A used system typically costs **\$42 per square foot**.

Typical ramp pricing for a 30" rise installed:	New	Used
1:12 Incline Ratio (includes 1 platform at the door and installation) ADA recommended slope	\$5,000 range + tax	\$4,000 range + tax
1:8 Incline Ratio (includes 1 platform at the door and installation)	\$3,800 range + tax	\$3,000 range + tax

If your needs are temporary, Lifeway Mobility also offers **rental options**.

The cost of a rental ramp will vary based on size and configuration, but at [Lifeway Mobility](#), a 30-foot ramp with one 4' x 4' landing will typically cost about **\$331/month** with an additional one-time fee of **\$1,272** for delivery, installation and removal. This would accommodate a rise of 3 to 4 feet.

Please discuss current rates and details with your Accessibility Consultant.

We also offer a buyback program for ramps purchased from Lifeway Mobility. Typically, we will offer between 5%-20% of the ramp's original value minus the cost of installation and removal fees.

Installation

Once you accept our proposal, a Customer Care Coordinator will schedule your ramp installation. This can often be scheduled within days of accepting the proposal.

On the day of your installation, Lifeway Mobility technicians will arrive with the ramp and installation should be completed the same day. Exact installation time will vary depending on the size and layout of the ramp.

After installation is completed, the technician will go over any necessary information or instructions.



Service

Modular ramps typically require no maintenance. If you do have an issue with your ramp, a Lifeway Mobility technician can inspect the ramp and determine if any adjustments need to be made.

The Lifeway Advantage

Why is Lifeway Mobility the right choice for your ramp installation? We refer to it as the Lifeway Advantage. In addition to a trained and certified staff, competitive prices, and multiple purchasing options, we offer:

- ✓ 1-year warranty on labor
- ✓ **FREE** Delivery
- ✓ Expert Installation
- ✓ **FREE** On-site Evaluation by a trained Accessibility Consultant

Please look over the following brochures to learn more about the modular ramps that Lifeway Mobility offers. If you have questions that are not covered by this e-book or brochures, please don't hesitate to contact one of our Customer Care Coordinators at our nearest location.

Connecticut
(860) 292-1111

Massachusetts
(508) 329-1031

Rhode Island
(401)213-9927

Indianapolis
(317) 773-1996

Minneapolis
(651) 462-3444

Thank you for choosing Lifeway Mobility, we look forward to helping make your home or business accessible.



PATHWAY[®] 3G

Modular Access System

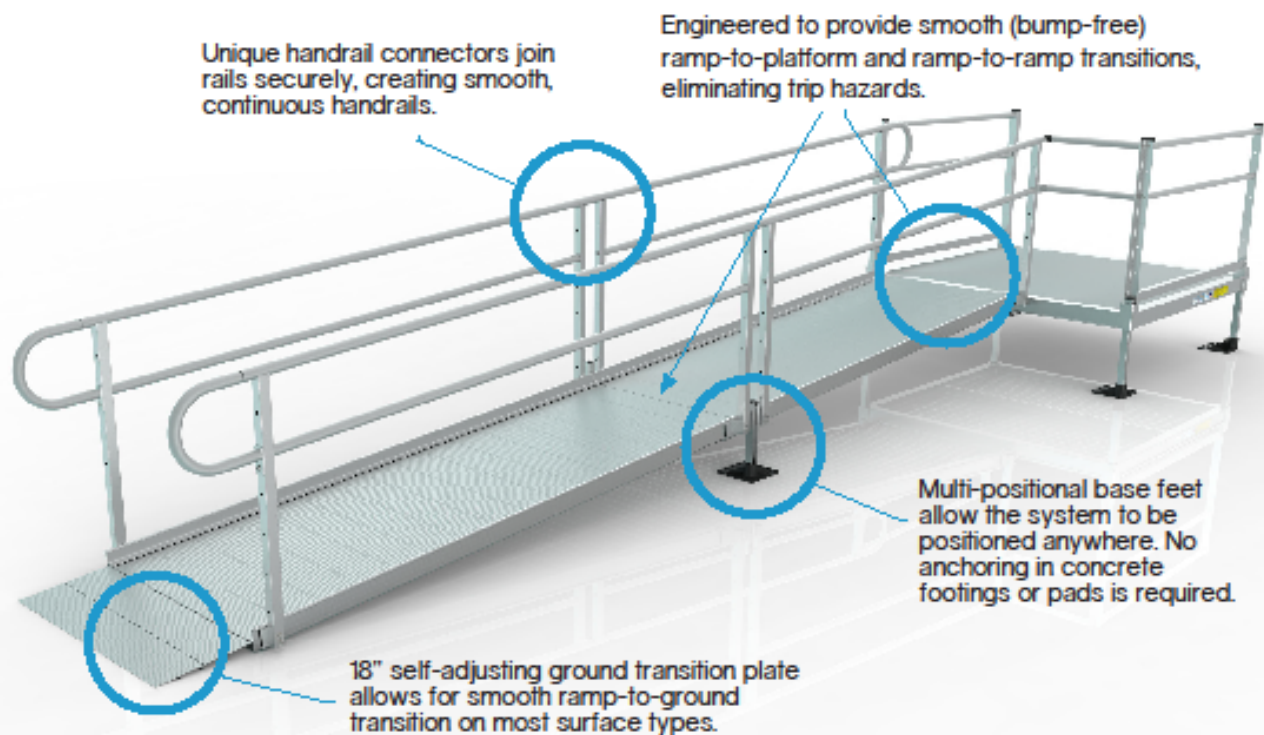


The most versatile and feature-rich ramp system available.

Anytime, anywhere you need access.

The PATHWAY 3G Modular Access System provides the safest, fastest, and most efficient solution to your accessibility needs.

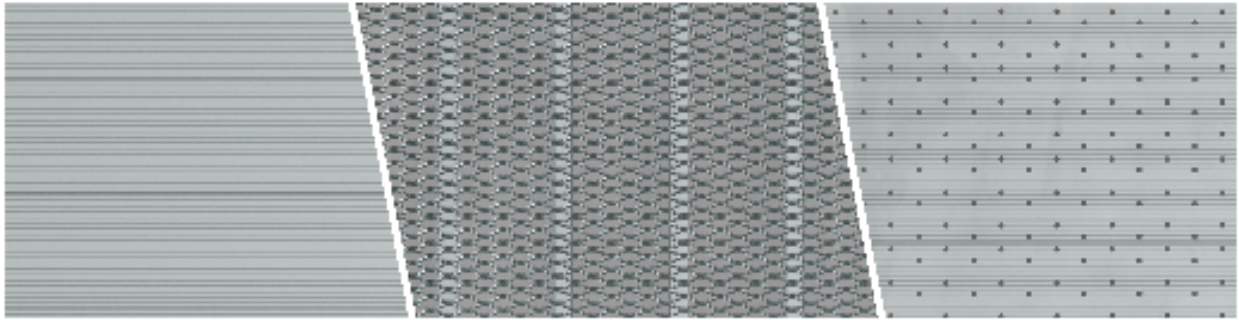
Its unique features, including universal components and interchangeable surface and handrail options, make it an excellent choice when your residential access requirements extend beyond the scope of a portable ramp. Durable, dependable, and American made, the PATHWAY 3G offers customizable solutions to suit the functional and aesthetic requirements of your home. If your needs change, the PATHWAY 3G can change with you.



The PATHWAY 3G allows for infinite modular configurations, creating safe and seamless access for both standard and unique entryways.

- Made of welded, high-strength aluminum, our maintenance-free design ensures safe, reliable access, lasting durability, and an attractive appearance.
- Quick and easy installation means minimal disruption for you and your family. A 24-foot system can be assembled with minimal tools in less than 30 minutes. The PATHWAY 3G can be installed during any season and withstand any climate.
- Safety is our top priority. The all-aluminum system will not deteriorate in the outdoor elements and all surface options feature superior slip-resistance to maintain traction in any weather.
- Sides are finished and flush with no hazardous nuts or bolts protruding into the usable ramp area.
- The PATHWAY 3G will not affect your home's property value. Typically, no permits are required, which means little or no long-term impact to your yard or home. The system is not altering or adding to the structure of the residence – no poured footers, no construction – just assembly.
- When secondary access is required, the PATHWAY Stair System is your answer. Designed to work in conjunction with the PATHWAY 3G ramp system but can also be used on an existing porch or deck, or as a standalone stair.

Surface Options



Choose from a variety of surfaces – solid, expanded metal, and perforated. Each allows for infinite ramp configurations and design flexibility while providing safe access to every home. All surfaces are made of durable aluminum and offer advanced slip-resistance.

• Solid

The solid surface, our most popular option, has an extruded tread and features raised ribs to provide slip resistance and all-weather traction.

• Expanded Metal

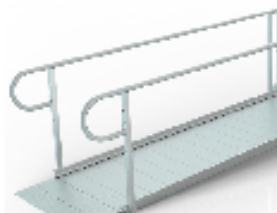
The diamond-shaped openings in our expanded metal surface allow multi-directional traction and reduced surface accumulation by allowing small debris, rain, and melting snow to flow through.

• Perforated

Unique to EZ-ACCESS ramps, the perforated surface is an extruded section with stamped (punched) holes. The perforated surface provides a functional, architectural design with slip resistance and all-weather traction, along with added drainage for wetter climates.

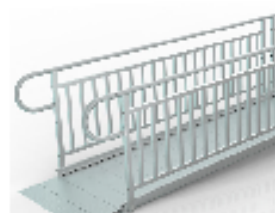
Handrail Options

A variety of handrail styles and options are available to suit any residential need. Whether you choose a single rail, a two-line rail, vertical or horizontal pickets, these versatile, component-based rails are easy to assemble and customize. All styles are made of aluminum and feature a durable design with continuous top rails.



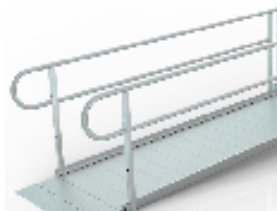
• Single Rail

The single rail is a versatile, one-line handrail for residential ramp access. This style features a continuous top rail and is the most economical solution.



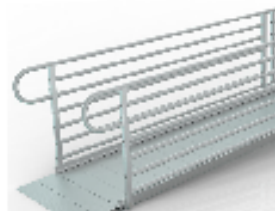
• Vertical Pickets*

Vertical pickets offer an added level of safety, especially for children and small pets. Our pre-assembled aluminum inserts meet the 4-inch sphere rule for spacing.



• Two-line Rail

The most popular handrail configuration, the two-line rail provides an additional gripping surface by adding a second rail below the continuous top rail.



• Horizontal Pickets*

Horizontal pickets offer an aesthetic option while maintaining safety. These horizontal inserts run parallel to the topmost rail and can be installed on standard PATHWAY handrail posts.

* 1:12 slope required

Finish Options

- ▶ An architectural finish comes standard on all of our systems.
- ▶ Powder coating is available for an additional cost and comes in three standard colors: Black, Bronze, and Tan.



Quick Specs

▶ Ramps



- Weight capacity: 1000 lbs.
- Standard widths: 36" & 48" (48" width available in solid surface only)
- Ramp handrail height: 34"

▶ Platforms



- Weight capacity: 1000 lbs.
- Platform handrail height: 34"

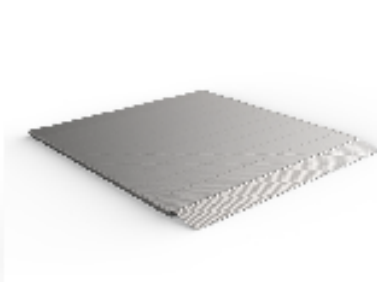
Options

▶ Stair System



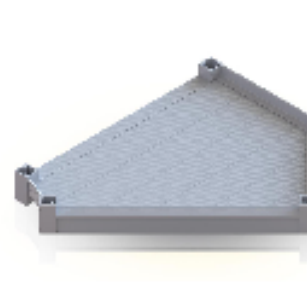
The adjustable stair is available in sizes from 8" to 59". Rear support legs can be added for a standalone stair.

▶ Landing Pad



The 54" x 54" surface provides a safe and solid landing at the bottom of a ramp run when ending in the grass or other soft surface.

▶ Angle Platform



Allows for multi-dimensional angle changes and uses less space.

▶ Universal Gate



Provides additional safety at the top of the stairs or the beginning of a ramp run.

We are committed to making the process of choosing the best ramp solution as worry-free as possible. With the PATHWAY 3G, you can be confident that your accessibility needs will be resolved safely and quickly.

- The PATHWAY 3G is uniquely designed and built to transition with you. The ramp system can be modified and reconfigured as your needs change.
- If you no longer need your system, the environmentally friendly PATHWAY 3G can be reused, rented, or resold. In addition, your investment in the ramp system is protected by our lifetime warranty.



TITAN™

Commercial
Ramp and Step System

- ADA and IBC compliant
- Three-year warranty
- All aluminum
- Easily configured
- Safe, strong and durable



TITAN™ Code Compliant Modular Access System

Fully engineered to provide safe, ADA and IBC compliant access to mobile modular buildings, portable classrooms, churches, temporary job sites, and more.

Our all-aluminum, universal product line is easy to install, reconfigure, relocate, and accommodates virtually any layout or lot configuration.



Code-compliant ramp, step and platform systems



Straight run with picketed guards and top platform



Ninety-degree turn with picketed guards and platform



Turnback system with picketed guards and top platform



Titan step system with picketed guards

TITAN™
Commercial
Ramp and Step System

Designed for your business

- Full compliance with ADA, IBC, OSHA and local code guidelines
- The ideal accessibility solution for modular structures, portable classrooms and site-built structures
- The field-proven design can be configured to fit most applications, allowing the flexibility needed to accommodate virtually any site plan or lot configuration
- Custom configurations available
- Site specific stamped drawings available

Features

- Made of corrosion-resistant aluminum for years of maintenance-free use
 - Durable and safe!
 - Long life cycle - will not rust, rot or corrode
 - Recyclable, non-corrosive, and naturally non-combustible
 - Virtually maintenance free
 - Lightweight
- Universal components for quick and easy installation
- Universal configuration (left or right turn)
 - Can easily be reconfigured, moved or expanded as needed
 - Adjustable heights
- Architecturally designed for a clean appearance
- Welded, extruded ramp and riser for reinforced strength and a permanent slip-resistant walking surface
- Individual serial numbers for easy tracking and inventory
- Standard configurations ship within 24-hours to help eliminate costly construction delays
- Three-year warranty for wear and durability
- 100% made in the USA

Specs

Ramps	48" clear width (between curbs)
Platforms	5'x5', 5'x7' and 6'x6'
Curbs	2"
Picketed Guards	42" high
Handrails (standard)	1½" diameter, 36" high
Handrails (child)	1½" diameter, 25" high
Legs	Fully independent and adjustable
Step Heights	18", 24", 30", 36", 42", 48", 54" and 60"
Risers	6" high, 12" deep
Warranty	3 years